

BinWeigh II+

Wheeled bin weighing with live data, tracking, mapping and route management

Approved dynamic weighing to Class Yb for wheeled bin collection vehicles complete with live over-air data transfer



Weighing and identifying waste

The waste industry is changing, operators are adapting the way they charge for their services. Whether considering ambitious recycling programs or polluter pays, Vishay PM Onboard's BinWeigh II+ is designed to integrate into computer systems, allowing precise measurement of waste materials collected. Vishay PM Onboard's BinWeigh has been designed in cooperation with Waste Management specialists and incorporates proven Vishay PM Onboard weighing technology, resulting in a system suitable for any type of waste refuse collection or recycling operation. The modular nature of Vishay PM Onboard BinWeigh ensures that the requirements of individual customers can be met.



TS01 Indicator shown with the BinWeigh 02 indicator

Dynamic weighing

Vishay PM Onboard BinWeigh automatically identifies the bin and dynamically weighs the wheeled bin contents during the normal lifting cycle. Data is stored via several options whilst updating the system database with new customer waste transactions.

- Pay-by-weight (DIFTAR) approved by NWML
- Customer identification (bin chips/geo tagging)
- Onboard telematics
- Stop unauthorised collections
- Live data transfer
- Complete management control (all vehicles and bins)
- Live mapping and tracking
- Lifter control
- Route management

An unequalled range of on board weighing systems for all types of waste and recycling collection vehicles.

Vishay PM Onboard the only company to provide the complete package.

Vishay PM Onboard Limited - Call Sales on 01274 771177

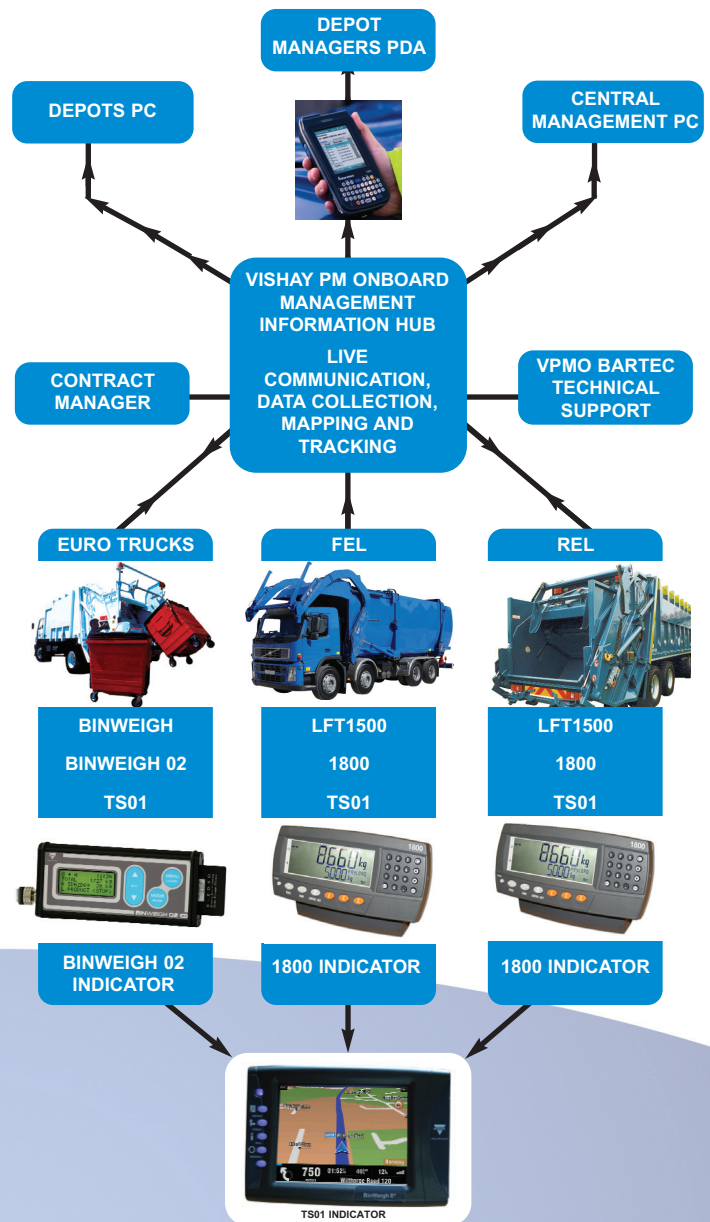
F: 01274 781178 E: sales@pmonboard.com www.pmonboard.com

TS01 On-Board Computer and Management Software

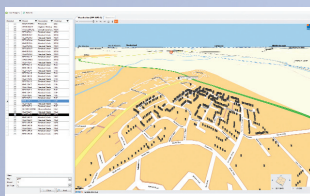
Benefits

- Touch screen on board computer TS01
- On-board weighing and ID system for waste collection vehicles
- Ideal for pay-as-you-throw measurement
- Domestic and commercial options
- Better management of material types for recycling
- Extended life of landfill sites
- Over-air transmission of customer's waste data
- Two way messaging between vehicle and office
- Vehicle tracking and directional navigation built-in
- Precise customer identification through RFID
- Flexible data reporting
- Time, date and weight stamping
- Provide a fully managed first class customer service with improved response times
- Maximise the planning, maintenance and analysis of collection routes
- Improve resolution of enquiries through access to full historical data resources - no more 'missed rounds' calls
- Increase communication and support through automatic updates to the system
- Economical, efficient and productive
- Operate vehicles efficiently and motivate crews
- Reduce mileage, costs, fuel, manpower and wear and tear; maximise time through reduction in paperwork.

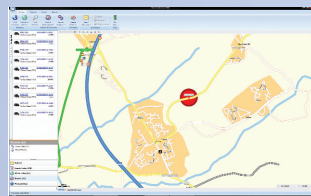
SYSTEM SCHEMATIC



OFFICE MANAGEMENT SCREENS



Bin Routing



Exclusion Zone

IN CAB SCREENS



Mapping



Route Control